

## Key Features

- Deployment flexibility of 100GbE, 40GbE, 10GbE or 1GbE modules
- Smallest and lowest power 10GbE optic module form factor
- Hot swappable to maximize uptime and simplify serviceability
- SFP+ Optical interoperability with 10GbE XFP, X2 and XENPAK pluggable form factors
- QSFP+ Optical interoperability with 40GbE CFP and QSFP+ pluggable form factors
- QSFP100 pluggable transceivers and cables for high density 100G deployments. Optical interoperability with 100GbE CFP, CFP2 and CPAK
- CFP2 Optical interoperability with 100GbE QSFP100, CFP, CXP and CPAK pluggable form factors
- Flexibility of media and interface choice on a port-by-port basis
- Support for Tunable 10Gigabit DWDM to provide high-capacity bandwidth across a long-haul optical fiber network
- Robust design for enhanced reliability
- QSFP+ Universal transceiver for 40G operations over duplex multi-mode and single-mode fiber. Interoperable with IEEE 40GbE LR4 and LRL4 for easier migrations from 10G to 40G and to single mode fiber
- Parallel QSFP+ transceivers for both multi-mode and single-mode enable flexible 4x10G options for gradual migration from 10G to 40G

## Overview

The Arista Optical Modules and Cables offer customers a wide variety of high-density and low-power 100 Gigabit, 40 Gigabit, 10 Gigabit, 1 Gigabit, and 100 Megabit Ethernet connectivity options over fiber or copper media.

To accommodate an ever increasing spectrum of applications Arista offers a wide choice of QSFP100, CFP2, Quad Small Form-Factor Pluggable (QSFP+) and Small Form-Factor Pluggable (SFP) transceiver types that ensures the advantages of open standards, power efficiency and the broadest range of media types are offered. Each module is optimized for different media and reach (ranging from 0.5 meters to 80 kilometers). In addition, the SFP+ ports also support three Gigabit Ethernet SFP transceiver types for single-mode fiber, multi-mode fiber, and Cat-5 copper.

Integrated optics on some products deliver cost effective solutions that are optimized for a choice of interface speed and density in an all-in-one MXP (multi-speed port) interface. The MXP interfaces present standard fiber interfaces and are fully compliant to the relevant IEEE specifications ensuring multi-vendor interoperability as well as the benefits of extended reach and increased reliability.



10GBASE-CR Copper Cable

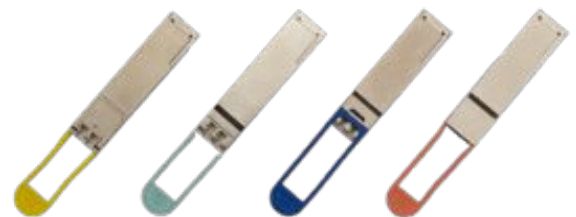


10GBASE-SR and LR SFP+

1000BASE-T SFP



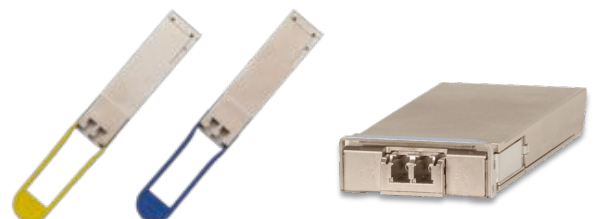
40GBASE-CR4 to 4x 10GBASE-CR Copper Cable



40GBASE-LRL4, UNIV, LR4 and XSR4 QSFP+



100GBASE-CR4 Copper Cable



100GBASE-LRL4 and LR4 QSFP100 and CFP2

## 100 Gigabit Ethernet CFP2 Options

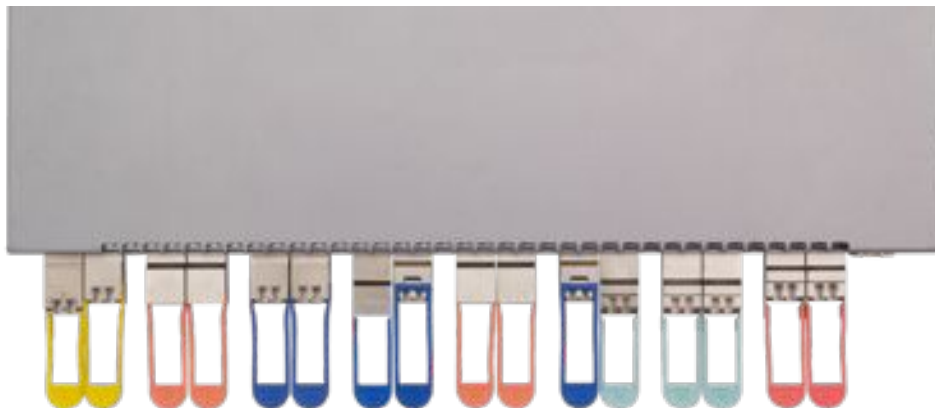
PHY Type	Reach
100GBASE-XSR10	Up to 300m over parallel OM3 multi-mode fiber or 400m over parallel OM4 multi-mode fiber
100GBASE-LR4	Up to 10km over single-mode fiber
100GBASE-ER4	Up to 40km over single-mode fiber

## 100 Gigabit Ethernet QSFP100 Options

PHY Type	Reach
100GBASE-CR4	Twin-ax copper cables with link lengths of 1m, 2m, 3m and 5m
100GBASE-AOC	Active Optical Cable with link lengths of 3m to 30m pre-terminated
100GBASE-SR4	Up to 70m over parallel OM3 multi-mode fiber or 100m over parallel OM4 multi-mode fiber
100GBASE-LR4	Up to 10km over single-mode fiber (Optical interoperability with 100GBASE-LRL4 up to 2km)
100GBASE-LRL4	Up to 2km over single-mode fiber (Optical interoperability with 100GBASE-LR4 up to 2km)
100GBASE-CWDM4	Up to 2km over single-mode fiber, 100G/40G Dual rate CWDM4

## 40 Gigabit Ethernet QSFP+ Options

PHY Type	Reach
40GBASE-CR4	Twin-ax copper cables with link lengths of 0.5m, 1m, 2m, 3m and 5m
40GBASE-AOC	Active Optical Cable with link lengths of 3m to 100m pre-terminated
40GBASE-SR4	Up to 100m over parallel OM3 multi-mode fiber or 150m over parallel OM4 multi-mode fiber
40GBASE-XSR4	Up to 300m over parallel OM3 multi-mode fiber or 400m over parallel OM4 multi-mode fiber
40GBASE-BIDI	Up to 100m over duplex OM3 multi-mode fiber or 150m over duplex OM4 multi-mode fiber
40GBASE-UNIV	Up to 150m over duplex OM3/OM4 multi-mode fiber or 500m over duplex single-mode fiber
40GBASE-LR4	Up to 10km over single-mode fiber (Optical interoperability with 40GBASE-LRL4 up to 1km)
40GBASE-LRL4	Up to 1km over single-mode fiber (Optical interoperability with 40GBASE-LR4 up to 1km)
40GBASE-PLRL4	Up to 1km over parallel single-mode fiber (Optical interoperability with 4x10G LR/LRL up to 1km)
40GBASE-PLR4	Up to 10km over parallel single-mode fiber (Optical interoperability with 4x10G LR up to 10km and LRL up to 1km)
40GBASE-ER4	Up to 40km over single-mode fiber



Broad portfolio of Arista 40G QSFP+ Transceivers

## 10 Gigabit Ethernet SFP+ Options

PHY Type	Reach
10GBASE-CR	Twin-ax copper cables with link lengths of 0.5m, 1m, 1.5m, 2m, 2.5m, 3m and 5m
10GBASE-CR (QSFP+)	Pre-terminated QSFP+ to 4 x SFP+ twin-ax copper cables with link lengths of 0.5m, 1m, 2m, 3m and 5m
10GBASE-AOC	Active Optical Cable with link lengths of 3m, 5m, 7m, 10m, 15m, 20m, 25m and 30m
10GBASE-SR	Up to 300m link length with 2000 MHz*km MMF (OM3). Optical interoperability with 10GBASE-SRL
10GBASE-SRL	Up to 100m link length with 2000 MHz*km MMF (OM3). Optical interoperability with 10GBASE-SR
10GBASE-LR	Up to 10km link length over single-mode fiber (SMF, G.652). Optical interoperability with 10GBASE-LRL
10GBASE-LRL	Up to 1km link length over single-mode fiber (SMF, G.652). Optical interoperability with 10GBASE-LR
10GBASE-ER	Up to 40km link length over single-mode fiber (SMF, G.652)
10GBASE-ZR	Up to 80km link length over single-mode fiber (SMF, G.652)
10GBASE-DWDM	Up to 80km link length DWDM over single-mode fiber (SMF, G.652)

## Gigabit Ethernet SFP Options

PHY Type	Reach
1000BASE-SX	Up to 550m link length with 500 MHz km MMF (OM2)
1000BASE-LX	Up to 10km link length on SMF and up to 550m on MMF*
1000BASE-T	Up to 100m link length over Category 5 copper cables, supporting both 100 Megabit and 1 Gigabit Ethernet

\*To ensure that specifications are met over FDDI-grade OM1 and OM2 fibers, the transmitter should be coupled through a mode conditioning patch cord. No mode conditioning patch cord is required for applications over OM3.

## Physical Characteristics (HxWxD)

- QSFP100: 13.5 x 18.4 x 72.4mm
- CFP2: 12.4 x 41.5 x 107.5 mm
- QSFP+: 13.5 x 18.4 x 72.4mm
- SFP+: 8.55 x 13.7 x 56.5mm

## Environmental Characteristics

- Operating Temperature: 0 to 40C\*\*
- Storage Temperature: -40 to 70C
- Relative Humidity: 5 to 95%
- Operating Altitude: 0-10,000 ft

## Power Requirements (Maximum)

- Arista SFP and SFP+ modules (except for ER and DWDM): 1 W
- Arista QSFP+ 40GBASE-SR4, XSR4; SFP+ ER, ZR and DWDM modules: 1.5 W
- Arista 40GBASE-UNIV, BIDI, LRL4, LR4, PLR4, PLRL4 and ER4 modules: 3.5 W
- Arista CFP2 100GBASE-XSR10, LR4 and ER4: 12W
- Arista QSFP100 SR4, AOC, CWDM4: 3.5W
- Arista QSFP100 100GBASE-LR4: 4.5W
- Arista QSFP100 100GBASE-LRL4: 4.0W

## Safety

- Laser Class 1 21CFR-1040.10 LN#50
- Laser Class 1 IEC60825-1

## IEEE Compliance

- 802.3ab 1000BASE-T
- 802.3z 1000BASE-X
- 802.3ae 10 Gigabit Ethernet
- 802.3ba 40 and 100 Gigabit Ethernet
- 802.3bm 40 and 100 Gigabit Ethernet

## Standards Compliance

- GR-20-CORE
- GR-326-CORE
- GR-1435-CORE
- QSFP+/QSFP28: SFF-8449 and 8636
- SFP+: SFF-8431, 8461 and 8472
- CFP MSA
- ROHS-6

- All cables and cable assemblies used must be compliant with the standards specified in the standards section

- Minimum cabling distance for -LR, -SR, -SX, -LX modules is 2m according to IEEE standards

\*\* Operating temperature for DWDM optics is 0 - 35C

\*\*\* Links beyond 30 km over single-mode fiber are considered engineered links as per IEEE 802.3ae.

## Gigabit Ethernet SFP Specifications

PHY Type	Connector Type	Wave-length (nm)	Cable Type	Core Size (um)	Modal Bandwidth (MHz*Km)	Tx power (dBm)	Rx power (dBm)	Operating Distance
1000BASE-SX	LC	850	MMF	62.5	160	-9.5 to -4.0	-17	220m
				62.5	200			275m
				50.0	400			500m
				50.0	500			550m
1000BASE-LX	LC	850	MMF*	62.5	500	-9.5 to -3.0	-19	550m
				50.0	400			550m
	50.0	500	550m					
1000BASE-T	RJ-45	-	Cat5 (UTP)	-	-	-	-	100m

## 10 Gigabit Ethernet Cable Specifications

PHY Type	Connector Type	Wavelength (nm)	Cable Type	Core Size (um)	Modal Bandwidth (MHz*Km)	Operating Distance
10GBASE-CR	SFP+ (Both ends)	-	Twinax Copper	-	-	0.5m to 5m
10GBASE-CR	QSFP+ to 4 x SFP+	-	Twinax Copper	-	-	0.5m to 5m
10GBASE-AOC	SFP+ (Both ends)	850nm	MMF	-	-	3m to 30m

## 10 Gigabit Ethernet SFP+ Specifications

PHY Type	Connector Type	Wave-length (nm)	Cable Type	Core Size (um)	Modal Bandwidth (MHz*Km)	Tx power (dBm)	Rx power (dBm)	Operating Distance
10GBASE-SR	LC	850	MMF	62.5	200	-7.3 to -1.0	-9.9 to -1.0	33m
				50.0	400			66m
				50.0	500			82m
				50.0	2000 (OM3)			300m
				50.0	4700 (OM4)			400m
10GBASE-SRL	LC	850	MMF	62.5	200	-8.0 to -1.0	-9.9 to -1.0	11m
				50.0	400			22m
				50.0	500			27m
				50.0	2000 (OM3)			100m
50.0	4700 (OM4)	150m						
10GBASE-LRL	LC	1310	SMF	G.652	-	-8.2 to 0.5	-12.5 to 0.5	1km
10GBASE-LR	LC	1310	SMF	G.652	-	-8.2 to 0.5	-14.4 to 0.5	10km
10GBASE-ER	LC	1550	SMF	G.652	-	-4.7 to 4.0	-15.0 to -1.0	40km***
10GBASE-ZR	LC	1550	SMF	G.652	-	-1.0 to 4.0	-23.0 to -7.0	80km
10GBASE-DWDM (Fixed wavelength)**	LC	C-Band 1567.95 to 1529.94	SMF	G.652	-	-4.7 to 4.0	-15.0 to -1.0	40km
						-1.0 to 4.0	-23.0 to -7.0	80km
10GBASE-DWDM (Tunable)	LC					-1.0 to 3.0	-23.0 to -7.0	80km

## 40 Gigabit Ethernet QSFP+ Cable Specifications

PHY Type	Connector Type	Wavelength (nm)	Cable Type	Core Size (um)	Modal Bandwidth (MHz*Km)	Operating Distance
40GBASE-CR4	QSFP+ to QSFP+	-	Twinax Copper	-	-	0.5m to 5m
40GBASE-AOC	QSFP+ to QSFP+	850	MMF	-	-	3m to 100m

### 40 Gigabit Ethernet QSFP+ Optic Specifications

PHY Type	Connector Type	Wave-length (nm)	Cable Type	Core Size (um)	Modal Bandwidth (MHz*Km)	Tx power (dBm)	Rx power (dBm)	Operating Distance
40GBASE-SR4	MPO	850	OM3 OM4	50.0 50.0	2000 (OM3) 4700 (OM4)	-7.6 to -1 /lane	-9.5 to +2.4 /lane	100m 150m
40GBASE-XSR4	MPO	850	OM3 OM4	50.0 50.0	2000 (OM3) 4700 (OM4)	-7.5 to +1 /lane	-9.9 to +2.4 /lane	300m 400m
40GBASE-BIDI	LC	850 900	OM3 OM4	50.0 50.0	2000 (OM3) 4700 (OM4)	-4 to +5 /lane	-6 to +5 /lane	100m 150m
40GBASE-UNIV	LC	1271 1291 1311 1331	OM3 OM4	50.0 50.0	2000 (OM3) 4700 (OM4)	-7 to +4.3 /lane	-10 to +4.3 /lane	150m 150m
			SMF	G.652	-	-10 to +2.3 /lane	-13.7 to +2.3 /lane	500m
40GBASE-LR4	LC		SMF	G.652	-	-7 to +2.3 /lane	-13.7 to +2.3 /lane	10km
40GBASE-LRL4	LC		SMF	G.652	-	-7 to +2.3 /lane	-11.5 to +2.3 /lane	1km
40GBASE-ER4	LC		SMF	G.652	-	-2.7 to +3.8 /lane	-21.2 to -4.5 /lane	40km**
40GBASE-PLRL4	MPO	1310	SMF	G.652	-	-8.2 to +0.5 /lane	-12.5 to +0.5 /lane	1km
40GBASE-PLR4	MPO	1310	SMF	G.652	-	-8.2 to +0.5 /lane	-14.4 to +0.5 /lane	10km



100GBASE-LR4 QSFP100



40GBASE-UNIV QSFP+



100GBASE-CR4



10GBASE-CR QSFP+ to 4 x SFP+



40GBASE-AOC Cable



100GBASE-LR4 CFP2

### 100 Gigabit Ethernet Cable Specifications

PHY Type	Connector Type	Wavelength (nm)	Cable Type	Core Size (um)	Modal Bandwidth (MHz*Km)	Operating Distance
100GBASE-CR4	QSFP100 to QSFP100	-	Twinax Copper	-	-	1, 2, 3, 5m
100GBASE-AOC	QSFP100 to QSFP100	850	MMF	-	-	3m to 30m

### 100 Gigabit Ethernet Optic Specifications

PHY Type	Connector Type	Wave-length (nm)	Cable Type	Core Size (um)	Modal Bandwidth (MHz*Km)	Tx power (dBm)	Rx power (dBm)	Operating Distance
100GBASE-SR4	MPO	850	OM3 OM4	50.0 50.0	2000 (OM3) 4700 (OM4)	-8.4 to +2.4 /lane	-10.3 to +2.4 /lane	70m 100m
100GBASE-CWDM4	LC	1271 1391 1311 1331	SMF	G.652	-	-6.5 to +2.5 /lane	-11.5 to +2.5 /lane	2km
100GBASE-LR4	LC	1295.56 1300.05 1304.58 1309.14	SMF	G.652	-	-4.3 to +4.5 /lane	-10.6 to +4.5 /lane	10km
100GBASE-LRL4	LC		SMF	G.652	-	-6.0 to +4.5 /lane	-10.0 to +4.5 /lane	2km
100GBASE-ER4	LC		SMF	G.652	-	-2.9 to +2.9 /lane	-20.9 to +4.5 /lane	40km*
100GBASE-XSR10	MPO-24	850	OM3 OM4	50.0 50.0	2000 (OM3) 4700 (OM4)	-7.6 to +2.4 /lane	-9.5 to +2.4 /lane	300m 400m
Arista MXP: Embedded Optics	MPO-24	850	OM3 OM4	50.0 50.0	2000 (OM3) 4700 (OM4)	-7.6 to +2.4 /lane	-9.5 to +2.4 /lane	300m 400m

\* Links beyond 30 km over single-mode fiber are considered engineered links as per IEEE 802.3ba and 802.3bm

Order Number	Product Description
<b>100 Gigabit Ethernet CFP2 Optics</b>	
CFP2-100G-XSR10	100GBASE-XSR10 CFP2 Optics Module, up to 300m over OM3 MMF or 400m over OM4 MMF
CFP2-100G-LR4	100GBASE-LR4 CFP2 Optics Module, up to 10km over duplex SMF
CFP2-100G-ER4	100GBASE-ER4 CFP2 Optics Module, up to 40km over duplex SMF
<b>100 Gigabit Ethernet QSFP100 Twinax Copper cables</b>	
CAB-Q-Q-100G-1M	100GBASE-CR4 QSFP100 to QSFP100 Twinax Copper Cable 1 meter
CAB-Q-Q-100G-2M	100GBASE-CR4 QSFP100 to QSFP100 Twinax Copper Cable 2 meter
CAB-Q-Q-100G-3M	100GBASE-CR4 QSFP100 to QSFP100 Twinax Copper Cable 3 meter
CAB-Q-Q-100G-5M	100GBASE-CR4 QSFP100 to QSFP100 Twinax Copper Cable 5 meter
<b>100 Gigabit Ethernet QSFP100 Active Optical Cables</b>	
AOC-Q-Q-100G-3M	100GbE QSFP100 to QSFP100 Active Optical Cable, 3m
AOC-Q-Q-100G-5M	100GbE QSFP100 to QSFP100 Active Optical Cable, 5m
AOC-Q-Q-100G-7M	100GbE QSFP100 to QSFP100 Active Optical Cable, 7m
AOC-Q-Q-100G-10M	100GbE QSFP100 to QSFP100 Active Optical Cable, 10m
AOC-Q-Q-100G-15M	100GbE QSFP100 to QSFP100 Active Optical Cable, 15m
AOC-Q-Q-100G-20M	100GbE QSFP100 to QSFP100 Active Optical Cable, 20m
AOC-Q-Q-100G-25M	100GbE QSFP100 to QSFP100 Active Optical Cable, 25m
AOC-Q-Q-100G-30M	100GbE QSFP100 to QSFP100 Active Optical Cable, 30m
<b>100 Gigabit Ethernet QSFP100 Optics</b>	
QSFP-100G-SR4	100GBASE-SR4 QSFP100 transceiver, up to 70m over parallel OM3 or 100m over OM4 multi-mode fiber
QSFP-100G-LR4	100GBASE-LR4 QSFP100 Optics Module, up to 10km over duplex SMF
QSFP-100G-LRL4	100GBASE-LRL4 QSFP100 Optics Module, up to 2km over duplex SMF
QSFP-100G-CWDM4	100GBASE-CWDM4 QSFP100 Optics Module, up to 2km over duplex SMF
<b>40 Gigabit Ethernet QSFP+ Optics</b>	
QSFP-40G-SR4	40GBASE-SR4 QSFP+ Optic, up to 100m over OM3 MMF or 150m over OM4 MMF
QSFP-40G-XSR4	40GBASE-XSR4 QSFP+ Optic, up to 300m over OM3 MMF or 400m over OM4 MMF
QSFP-40G-SRBD	40GBASE-BIDI Bidirectional QSFP+ Optic, up to 100m over duplex OM3 or 150m over duplex OM4 multi-mode fiber
QSFP-40G-UNIV	40G Universal QSFP+ Optic, up to 150m over duplex OM3 and OM4 MMF or 500m over duplex SMF
QSFP-40G-LR4	40GBASE-LR4 QSFP+ Optic, up to 10km over SMF
QSFP-40G-LRL4	40G QSFP+ Optic, up to 1km over duplex SMF
QSFP-40G-PLR4	40G QSFP+ Optic, up to 10km over parallel SMF (4x10G LR up to 10km) MTP-12
QSFP-40G-PLRL4	40G QSFP+ Optic, up to 1km over parallel SMF (4x10G LR up to 1km) MTP-12
QSFP-40G-ER4	40GBASE-ER4 QSFP+ Optic, up to 40km over SMF
<b>40 Gigabit Ethernet QSFP+ Active Optical Cables</b>	
AOC-Q-Q-40G-3M	QSFP+ to QSFP+ 40GbE Active Optical Cable 3 meter
AOC-Q-Q-40G-5M	QSFP+ to QSFP+ 40GbE Active Optical Cable 5 meter
AOC-Q-Q-40G-7M	QSFP+ to QSFP+ 40GbE Active Optical Cable 7 meter
AOC-Q-Q-40G-10M	QSFP+ to QSFP+ 40GbE Active Optical Cable 10 meter
AOC-Q-Q-40G-15M	QSFP+ to QSFP+ 40GbE Active Optical Cable 15 meter
AOC-Q-Q-40G-20M	QSFP+ to QSFP+ 40GbE Active Optical Cable 20 meter
AOC-Q-Q-40G-25M	QSFP+ to QSFP+ 40GbE Active Optical Cable 25 meter
AOC-Q-Q-40G-30M	QSFP+ to QSFP+ 40GbE Active Optical Cable 30 meter
AOC-Q-Q-40G-50M	QSFP+ to QSFP+ 40GbE Active Optical Cable 50 meter
AOC-Q-Q-40G-75M	QSFP+ to QSFP+ 40GbE Active Optical Cable 75 meter
AOC-Q-Q-40G-100M	QSFP+ to QSFP+ 40GbE Active Optical Cable 100 meter

Order Number	Product Description
<b>40 Gigabit Ethernet QSFP+ Twinax Copper Cables</b>	
CAB-Q-Q-0.5M	40GBASE-CR4 QSFP+ to QSFP+ Twinax Copper Cable 0.5 meter
CAB-Q-Q-1M	40GBASE-CR4 QSFP+ to QSFP+ Twinax Copper Cable 1 meter
CAB-Q-Q-2M	40GBASE-CR4 QSFP+ to QSFP+ Twinax Copper Cable 2 meter
CAB-Q-Q-3M	40GBASE-CR4 QSFP+ to QSFP+ Twinax Copper Cable 3 meter
CAB-Q-Q-5M	40GBASE-CR4 QSFP+ to QSFP+ Twinax Copper Cable 5 meter
CAB-Q-S-0.5M	4 x 10GbE QSFP+ to 4 x SFP+ Twinax Copper Cable 0.5 meter
CAB-Q-S-1M	4 x 10GbE QSFP+ to 4 x SFP+ Twinax Copper Cable 1 meter
CAB-Q-S-2M	4 x 10GbE QSFP+ to 4 x SFP+ Twinax Copper Cable 2 meter
CAB-Q-S-3M	4 x 10GbE QSFP+ to 4 x SFP+ Twinax Copper Cable 3 meter
CAB-Q-S-5M	4 x 10GbE QSFP+ to 4 x SFP+ Twinax Copper Cable 5 meter
<b>10 Gigabit Ethernet SFP+ Optics</b>	
SFP-10G-SRL	10GBASE-SRL SFP+ Optics Module, up to 100m over OM3 MMF or 150m over OM4 MMF
SFP-10G-SR	10GBASE-SR SFP+ Optics Module, up to 300m over OM3 MMF or 400m over OM4 MMF
SFP-10G-LRL	10GBASE-LRL SFP+ Optics Module, up to 1km over duplex SMF
SFP-10G-LR	10GBASE-LR SFP+ Optics Module, up to 10km over duplex SMF
SFP-10G-ER	10GBASE-ER SFP+ Optics Module, up to 40km over duplex SMF
SFP-10G-ZR	10GBASE-ZR SFP+ Optics Module, up to 80km over duplex SMF
SFP-10G-DZ-T	10GBASE-DWDM Tunable SFP+ Optics Module, Full C-Band 50 GHz ITU Grid, up to 80km over duplex SMF
<b>10 Gigabit Ethernet SFP+ Cables</b>	
CAB-SFP-SFP-0.5M	10GBASE-CR SFP+ Cable 0.5 meter
CAB-SFP-SFP-1M	10GBASE-CR SFP+ Cable 1 meter
CAB-SFP-SFP-1.5M	10GBASE-CR SFP+ Cable 1.5 meter
CAB-SFP-SFP-2M	10GBASE-CR SFP+ Cable 2 meter
CAB-SFP-SFP-2.5M	10GBASE-CR SFP+ Cable 2.5 meter
CAB-SFP-SFP-3M	10GBASE-CR SFP+ Cable 3 meter
CAB-SFP-SFP-5M	10GBASE-CR SFP+ Cable 5 meter
<b>10G Gigabit Ethernet SFP+ Active Optical Cables</b>	
AOC-S-S-10G-3M	SFP+ to SFP+ 10GbE Active Optical Cable 3 meter
AOC-S-S-10G-5M	SFP+ to SFP+ 10GbE Active Optical Cable 5 meter
AOC-S-S-10G-7M	SFP+ to SFP+ 10GbE Active Optical Cable 7 meter
AOC-S-S-10G-10M	SFP+ to SFP+ 10GbE Active Optical Cable 10 meter
AOC-S-S-10G-15M	SFP+ to SFP+ 10GbE Active Optical Cable 15 meter
AOC-S-S-10G-20M	SFP+ to SFP+ 10GbE Active Optical Cable 20 meter
AOC-S-S-10G-25M	SFP+ to SFP+ 10GbE Active Optical Cable 25 meter
AOC-S-S-10G-30M	SFP+ to SFP+ 10GbE Active Optical Cable 30 meter
<b>Gigabit Ethernet SFP Optics and Copper</b>	
SFP-1G-SX	1000BASE-SX SFP Optics Module
SFP-1G-LX	1000BASE-LX SFP Optics Module
SFP-1G-T	100/1000BASE-T SFP Copper Module

Order Number	Product Description
<b>10 Gigabit Ethernet SFP+ DWDM 40km Optics</b>	
SFP-10G-DW-60.61	10GBASE-DWDM 1560.61nm (ITU Channel 21) SFP+ Optics Module (100-GHz ITU grid) (40km Reach)
SFP-10G-DW-59.79	10GBASE-DWDM 1559.79nm (ITU Channel 22) SFP+ Optics Module (100-GHz ITU grid) (40km Reach)
SFP-10G-DW-58.98	10GBASE-DWDM 1558.98nm (ITU Channel 23) SFP+ Optics Module (100-GHz ITU grid) (40km Reach)
SFP-10G-DW-58.17	10GBASE-DWDM 1558.17nm (ITU Channel 24) SFP+ Optics Module (100-GHz ITU grid) (40km Reach)
SFP-10G-DW-57.36	10GBASE-DWDM 1557.36nm (ITU Channel 25) SFP+ Optics Module (100-GHz ITU grid) (40km Reach)
SFP-10G-DW-56.55	10GBASE-DWDM 1556.55nm (ITU Channel 26) SFP+ Optics Module (100-GHz ITU grid) (40km Reach)
SFP-10G-DW-55.75	10GBASE-DWDM 1555.75nm (ITU Channel 27) SFP+ Optics Module (100-GHz ITU grid) (40km Reach)
SFP-10G-DW-54.94	10GBASE-DWDM 1554.94nm (ITU Channel 28) SFP+ Optics Module (100-GHz ITU grid) (40km Reach)
SFP-10G-DW-54.13	10GBASE-DWDM 1554.13nm (ITU Channel 29) SFP+ Optics Module (100-GHz ITU grid) (40km Reach)
SFP-10G-DW-53.33	10GBASE-DWDM 1553.33nm (ITU Channel 30) SFP+ Optics Module (100-GHz ITU grid) (40km Reach)
SFP-10G-DW-52.52	10GBASE-DWDM 1552.52nm (ITU Channel 31) SFP+ Optics Module (100-GHz ITU grid) (40km Reach)
SFP-10G-DW-51.72	10GBASE-DWDM 1551.72nm (ITU Channel 32) SFP+ Optics Module (100-GHz ITU grid) (40km Reach)
SFP-10G-DW-50.92	10GBASE-DWDM 1550.92nm (ITU Channel 33) SFP+ Optics Module (100-GHz ITU grid) (40km Reach)
SFP-10G-DW-50.12	10GBASE-DWDM 1550.12nm (ITU Channel 34) SFP+ Optics Module (100-GHz ITU grid) (40km Reach)
SFP-10G-DW-49.32	10GBASE-DWDM 1549.32nm (ITU Channel 35) SFP+ Optics Module (100-GHz ITU grid) (40km Reach)
SFP-10G-DW-48.51	10GBASE-DWDM 1548.51nm (ITU Channel 36) SFP+ Optics Module (100-GHz ITU grid) (40km Reach)
SFP-10G-DW-47.72	10GBASE-DWDM 1547.72nm (ITU Channel 37) SFP+ Optics Module (100-GHz ITU grid) (40km Reach)
SFP-10G-DW-46.92	10GBASE-DWDM 1546.92nm (ITU Channel 38) SFP+ Optics Module (100-GHz ITU grid) (40km Reach)
SFP-10G-DW-46.12	10GBASE-DWDM 1546.12nm (ITU Channel 39) SFP+ Optics Module (100-GHz ITU grid) (40km Reach)
SFP-10G-DW-45.32	10GBASE-DWDM 1545.32nm (ITU Channel 40) SFP+ Optics Module (100-GHz ITU grid) (40km Reach)
SFP-10G-DW-44.53	10GBASE-DWDM 1544.53nm (ITU Channel 41) SFP+ Optics Module (100-GHz ITU grid) (40km Reach)
SFP-10G-DW-43.73	10GBASE-DWDM 1543.73nm (ITU Channel 42) SFP+ Optics Module (100-GHz ITU grid) (40km Reach)
SFP-10G-DW-42.94	10GBASE-DWDM 1542.94nm (ITU Channel 43) SFP+ Optics Module (100-GHz ITU grid) (40km Reach)
SFP-10G-DW-42.14	10GBASE-DWDM 1542.14nm (ITU Channel 44) SFP+ Optics Module (100-GHz ITU grid) (40km Reach)
SFP-10G-DW-41.35	10GBASE-DWDM 1541.35nm (ITU Channel 45) SFP+ Optics Module (100-GHz ITU grid) (40km Reach)
SFP-10G-DW-40.56	10GBASE-DWDM 1540.56nm (ITU Channel 46) SFP+ Optics Module (100-GHz ITU grid) (40km Reach)
SFP-10G-DW-39.77	10GBASE-DWDM 1539.77nm (ITU Channel 47) SFP+ Optics Module (100-GHz ITU grid) (40km Reach)
SFP-10G-DW-38.98	10GBASE-DWDM 1538.98nm (ITU Channel 48) SFP+ Optics Module (100-GHz ITU grid) (40km Reach)
SFP-10G-DW-38.19	10GBASE-DWDM 1538.19nm (ITU Channel 49) SFP+ Optics Module (100-GHz ITU grid) (40km Reach)
SFP-10G-DW-37.40	10GBASE-DWDM 1537.40nm (ITU Channel 50) SFP+ Optics Module (100-GHz ITU grid) (40km Reach)
SFP-10G-DW-36.61	10GBASE-DWDM 1536.61nm (ITU Channel 51) SFP+ Optics Module (100-GHz ITU grid) (40km Reach)
SFP-10G-DW-35.82	10GBASE-DWDM 1535.82nm (ITU Channel 52) SFP+ Optics Module (100-GHz ITU grid) (40km Reach)
SFP-10G-DW-35.04	10GBASE-DWDM 1535.04nm (ITU Channel 53) SFP+ Optics Module (100-GHz ITU grid) (40km Reach)
SFP-10G-DW-34.25	10GBASE-DWDM 1534.25nm (ITU Channel 54) SFP+ Optics Module (100-GHz ITU grid) (40km Reach)
SFP-10G-DW-34.47	10GBASE-DWDM 1533.47nm (ITU Channel 55) SFP+ Optics Module (100-GHz ITU grid) (40km Reach)
SFP-10G-DW-32.68	10GBASE-DWDM 1532.68nm (ITU Channel 56) SFP+ Optics Module (100-GHz ITU grid) (40km Reach)
SFP-10G-DW-31.90	10GBASE-DWDM 1531.90nm (ITU Channel 57) SFP+ Optics Module (100-GHz ITU grid) (40km Reach)
SFP-10G-DW-31.12	10GBASE-DWDM 1531.12nm (ITU Channel 58) SFP+ Optics Module (100-GHz ITU grid) (40km Reach)
SFP-10G-DW-30.33	10GBASE-DWDM 1530.33nm (ITU Channel 59) SFP+ Optics Module (100-GHz ITU grid) (40km Reach)



Order Number	Product Description
<b>10 Gigabit Ethernet SFP+ DWDM 80km Optics</b>	
SFP-10G-DZ-60.61	10GBASE-DWDM 1560.61nm (ITU Channel 21) SFP+ Optics Module (100-GHz ITU grid) (80km Reach)
SFP-10G-DZ-59.79	10GBASE-DWDM 1559.79nm (ITU Channel 22) SFP+ Optics Module (100-GHz ITU grid) (80km Reach)
SFP-10G-DZ-58.98	10GBASE-DWDM 1558.98nm (ITU Channel 23) SFP+ Optics Module (100-GHz ITU grid) (80km Reach)
SFP-10G-DZ-58.17	10GBASE-DWDM 1558.17nm (ITU Channel 24) SFP+ Optics Module (100-GHz ITU grid) (80km Reach)
SFP-10G-DZ-57.36	10GBASE-DWDM 1557.36nm (ITU Channel 25) SFP+ Optics Module (100-GHz ITU grid) (80km Reach)
SFP-10G-DZ-56.55	10GBASE-DWDM 1556.55nm (ITU Channel 26) SFP+ Optics Module (100-GHz ITU grid) (80km Reach)
SFP-10G-DZ-55.75	10GBASE-DWDM 1555.75nm (ITU Channel 27) SFP+ Optics Module (100-GHz ITU grid) (80km Reach)
SFP-10G-DZ-54.94	10GBASE-DWDM 1554.94nm (ITU Channel 28) SFP+ Optics Module (100-GHz ITU grid) (80km Reach)
SFP-10G-DZ-54.13	10GBASE-DWDM 1554.13nm (ITU Channel 29) SFP+ Optics Module (100-GHz ITU grid) (80km Reach)
SFP-10G-DZ-53.33	10GBASE-DWDM 1553.33nm (ITU Channel 30) SFP+ Optics Module (100-GHz ITU grid) (80km Reach)
SFP-10G-DZ-52.52	10GBASE-DWDM 1552.52nm (ITU Channel 31) SFP+ Optics Module (100-GHz ITU grid) (80km Reach)
SFP-10G-DZ-51.72	10GBASE-DWDM 1551.72nm (ITU Channel 32) SFP+ Optics Module (100-GHz ITU grid) (80km Reach)
SFP-10G-DZ-50.92	10GBASE-DWDM 1550.92nm (ITU Channel 33) SFP+ Optics Module (100-GHz ITU grid) (80km Reach)
SFP-10G-DZ-50.12	10GBASE-DWDM 1550.12nm (ITU Channel 34) SFP+ Optics Module (100-GHz ITU grid) (80km Reach)
SFP-10G-DZ-49.32	10GBASE-DWDM 1549.32nm (ITU Channel 35) SFP+ Optics Module (100-GHz ITU grid) (80km Reach)
SFP-10G-DZ-48.51	10GBASE-DWDM 1548.51nm (ITU Channel 36) SFP+ Optics Module (100-GHz ITU grid) (80km Reach)
SFP-10G-DZ-47.72	10GBASE-DWDM 1547.72nm (ITU Channel 37) SFP+ Optics Module (100-GHz ITU grid) (80km Reach)
SFP-10G-DZ-46.92	10GBASE-DWDM 1546.92nm (ITU Channel 38) SFP+ Optics Module (100-GHz ITU grid) (80km Reach)
SFP-10G-DZ-46.12	10GBASE-DWDM 1546.12nm (ITU Channel 39) SFP+ Optics Module (100-GHz ITU grid) (80km Reach)
SFP-10G-DZ-45.32	10GBASE-DWDM 1545.32nm (ITU Channel 40) SFP+ Optics Module (100-GHz ITU grid) (80km Reach)
SFP-10G-DZ-44.53	10GBASE-DWDM 1544.53nm (ITU Channel 41) SFP+ Optics Module (100-GHz ITU grid) (80km Reach)
SFP-10G-DZ-43.73	10GBASE-DWDM 1543.73nm (ITU Channel 42) SFP+ Optics Module (100-GHz ITU grid) (80km Reach)
SFP-10G-DZ-42.94	10GBASE-DWDM 1542.94nm (ITU Channel 43) SFP+ Optics Module (100-GHz ITU grid) (80km Reach)
SFP-10G-DZ-42.14	10GBASE-DWDM 1542.14nm (ITU Channel 44) SFP+ Optics Module (100-GHz ITU grid) (80km Reach)
SFP-10G-DZ-41.35	10GBASE-DWDM 1541.35nm (ITU Channel 45) SFP+ Optics Module (100-GHz ITU grid) (80km Reach)
SFP-10G-DZ-40.56	10GBASE-DWDM 1540.56nm (ITU Channel 46) SFP+ Optics Module (100-GHz ITU grid) (80km Reach)
SFP-10G-DZ-39.77	10GBASE-DWDM 1539.77nm (ITU Channel 47) SFP+ Optics Module (100-GHz ITU grid) (80km Reach)
SFP-10G-DZ-38.98	10GBASE-DWDM 1538.98nm (ITU Channel 48) SFP+ Optics Module (100-GHz ITU grid) (80km Reach)
SFP-10G-DZ-38.19	10GBASE-DWDM 1538.19nm (ITU Channel 49) SFP+ Optics Module (100-GHz ITU grid) (80km Reach)
SFP-10G-DZ-37.40	10GBASE-DWDM 1537.40nm (ITU Channel 50) SFP+ Optics Module (100-GHz ITU grid) (80km Reach)
SFP-10G-DZ-35.82	10GBASE-DWDM 1535.82nm (ITU Channel 52) SFP+ Optics Module (100-GHz ITU grid) (80km Reach)
SFP-10G-DZ-35.04	10GBASE-DWDM 1535.04nm (ITU Channel 53) SFP+ Optics Module (100-GHz ITU grid) (80km Reach)
SFP-10G-DZ-34.25	10GBASE-DWDM 1534.25nm (ITU Channel 54) SFP+ Optics Module (100-GHz ITU grid) (80km Reach)
SFP-10G-DZ-33.47	10GBASE-DWDM 1533.47nm (ITU Channel 55) SFP+ Optics Module (100-GHz ITU grid) (80km Reach)
SFP-10G-DZ-32.68	10GBASE-DWDM 1532.68nm (ITU Channel 56) SFP+ Optics Module (100-GHz ITU grid) (80km Reach)
SFP-10G-DZ-31.90	10GBASE-DWDM 1531.90nm (ITU Channel 57) SFP+ Optics Module (100-GHz ITU grid) (80km Reach)
SFP-10G-DZ-31.12	10GBASE-DWDM 1531.12nm (ITU Channel 58) SFP+ Optics Module (100-GHz ITU grid) (80km Reach)
SFP-10G-DZ-30.33	10GBASE-DWDM 1530.33nm (ITU Channel 59) SFP+ Optics Module (100-GHz ITU grid) (80km Reach)
SFP-10G-DZ-29.55	10GBASE-DWDM 1529.55nm (ITU Channel 60) SFP+ Optics Module (100-GHz ITU grid) (80km Reach)

## Arista 50GHz Channel Numbers and Wavelengths (50GHz ITU grid)

Channel Number	Frequency (THz)	Wavelength (nm)	Channel Number	Frequency (THz)	Wavelength (nm)	Channel Number	Frequency (THz)	Wavelength (nm)
1	191.2	1567.95	33	192.8	1554.94	65	194.4	1542.14
2	191.25	1567.54	34	192.85	1554.53	66	194.45	1541.74
3	191.3	1567.13	35	192.9	1554.13	67	194.5	1541.35
4	191.35	1566.72	36	192.95	1553.73	68	194.55	1540.95
5	191.4	1566.31	37	193.0	1553.33	69	194.6	1540.55
6	191.45	1565.90	38	193.05	1552.92	70	194.65	1540.16
7	191.5	1565.49	39	193.1	1552.52	71	194.7	1539.76
8	191.55	1565.08	40	193.15	1552.12	72	194.75	1539.37
9	191.6	1564.68	41	193.2	1551.72	73	194.8	1538.97
10	191.65	1564.27	42	193.25	1551.32	74	194.85	1538.58
11	191.7	1563.86	43	193.3	1550.92	75	194.9	1538.18
12	191.75	1563.45	44	193.35	1550.51	76	194.95	1537.79
13	191.8	1563.04	45	193.4	1550.11	77	195.0	1537.39
14	191.85	1562.64	46	193.45	1549.71	78	195.05	1537.00
15	191.9	1562.23	47	193.5	1549.31	79	195.1	1536.61
16	191.95	1561.82	48	193.55	1548.91	80	195.15	1536.21
17	192.0	1561.42	49	193.6	1548.51	81	195.2	1535.82
18	192.05	1561.01	50	193.65	1548.11	82	195.25	1535.43
19	192.1	1560.60	51	193.7	1547.71	83	195.3	1535.03
20	192.15	1560.20	52	193.75	1547.31	84	195.35	1534.64
21	192.2	1559.79	53	193.8	1546.91	85	195.4	1534.25
22	192.25	1559.39	54	193.85	1546.52	86	195.45	1533.86
23	192.3	1558.98	55	193.9	1546.12	87	195.5	1533.46
24	192.35	1558.58	56	193.95	1545.72	88	195.55	1533.07
25	192.4	1558.17	57	194.0	1545.32	89	195.6	1532.68
26	192.45	1557.77	58	194.05	1544.92	90	195.65	1532.29
27	192.5	1557.36	59	194.1	1544.52	91	195.7	1531.90
28	192.55	1556.96	60	194.15	1544.13	92	195.75	1531.50
29	192.6	1556.55	61	194.2	1543.73	93	195.8	1531.11
30	192.65	1556.15	62	194.25	1543.33	94	195.85	1530.72
31	192.7	1555.74	63	194.3	1542.93	95	195.9	1530.33
32	192.75	1555.34	64	194.35	1542.54	96	195.95	1529.94

## Arista 100GHz Channel Numbers and Wavelengths (100GHz ITU grid)

Channel Number	Frequency (THz)	Wavelength (nm)	Channel Number	Frequency (THz)	Wavelength (nm)	Channel Number	Frequency (THz)	Wavelength (nm)
1	191.2	1567.95	17	192.8	1554.94	33	194.4	1542.14
2	191.3	1567.13	18	192.9	1554.13	34	194.5	1541.35
3	191.4	1566.31	19	193.0	1553.33	35	194.6	1540.55
4	191.5	1565.49	20	193.1	1552.52	36	194.7	1539.76
5	191.6	1564.68	21	193.2	1551.72	37	194.8	1538.97
6	191.7	1563.86	22	193.3	1550.92	38	194.9	1538.18
7	191.8	1563.04	23	193.4	1550.11	39	195.0	1537.39
8	191.9	1562.23	24	193.5	1549.31	40	195.1	1536.61
9	192.0	1561.42	25	193.6	1548.51	41	195.2	1535.82
10	192.1	1560.60	26	193.7	1547.71	42	195.3	1535.03
11	192.2	1559.79	27	193.8	1546.91	43	195.4	1534.25
12	192.3	1558.98	28	193.9	1546.12	44	195.5	1533.46
13	192.4	1558.17	29	194.0	1545.32	45	195.6	1532.68
14	192.5	1557.36	30	194.1	1544.52	46	195.7	1531.90
15	192.6	1556.55	31	194.2	1543.73	47	195.8	1531.11
16	192.7	1555.74	32	194.3	1542.93	48	195.9	1530.33

## Warranty

The Arista pluggables and cables include a one-year limited hardware warranty, which covers parts, repair, or replacement with a 10 business day turn-around after the unit is received.

## Service and Support

Support services including next business day and 4-hour advance hardware replacement are available. For service depot locations, please see: <http://www.arista.com/en/service>

### Headquarters

5453 Great America Parkway  
Santa Clara, California 95054  
408-547-5500

### Support

[support@arista.com](mailto:support@arista.com)  
408-547-5502  
866-476-0000

### Sales

[sales@arista.com](mailto:sales@arista.com)  
408-547-5501  
866-497-0000